

# THE **BASIC BAND** BOOK

by Mr. Glynn

# BARITONE

YOU ARE CREATIVE  
YOU ARE A MUSICIAN  
YOU CAN DO THIS

THIS BOOK BELONGS TO \_\_\_\_\_



for helpful videos, go to:

**[www.BasicBand.info](http://www.BasicBand.info)**



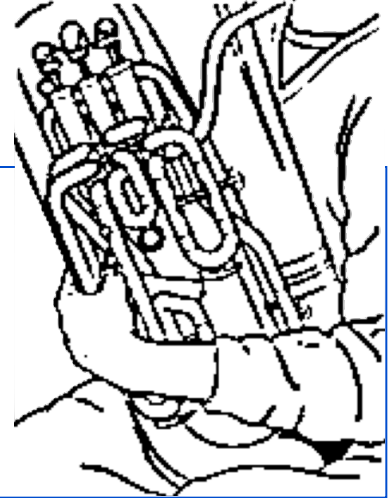
The contents of this book are licensed under a  
Creative Commons Attribution-NonCommercial 4.0 International License.

# BARITONE **BASICS**

Use the online videos listed with each topic to help you at home.  
[www.BasicBand.info](http://www.BasicBand.info)

## HOLDING

- Hug & grab with left hand
- Right hand finger tips *push* straight down



## EMBOUCHURE

- Put your lips together like you're saying "**M**"
- Push fast air through your tightly closed lips
- Rest the mouth piece on the center of your lips

**M**

– Baritone Video Lesson 1 –

## PLAYING POSITION

- Sit up straight
- Hold Baritone in your lap



## BREATHING

- in on **“OH”** out on **“TOH”**
- Never stop the air
- Stop your sound by breathing in

**OH**  
**TOH**

## FIRST SOUNDS

- LOW sound = Bb (“B-flat”)
- HIGHER sound = F
- Do NOT press down any valves

– Baritone Video Lesson 2 –

## TONGUING

- Say **“TOO”**
- Tongue goes against the back of your top teeth

**TOO**

– Baritone Video Lesson 3 –

# THE **MUSICAL** ALPHABET

Online Video Lessons for Everyone  
[www.BasicBand.info](http://www.BasicBand.info)

FORWARDS →

E F G A B C D E F G A B C

← BACKWARDS

A B C D E F G F E D C B A

## Q & A

---

- 1) What letter comes after **G** ?
  
- 2) When we move *forwards* in the alphabet, does the sound go up or down?
  
- 3) When we move *backwards* in the alphabet, does the sound go up or down?

## PENCIL GAMES

---

*WITHOUT looking at the previous page, fill in the missing letters:*

*forwards:*

1) **A** \_ \_ **D** \_ \_ \_ \_ **C** \_ \_

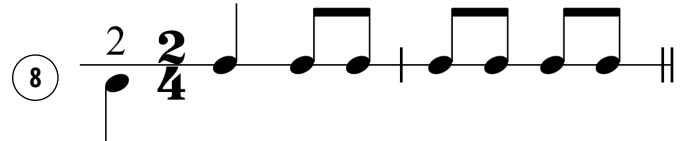
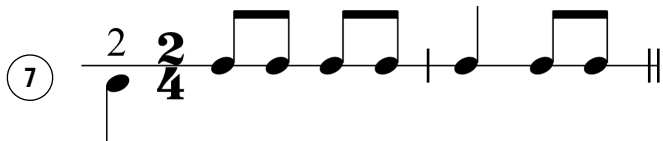
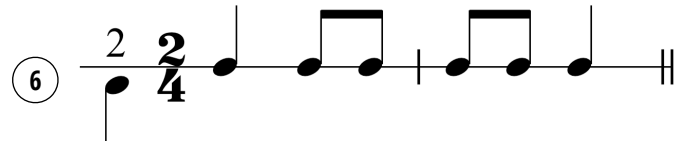
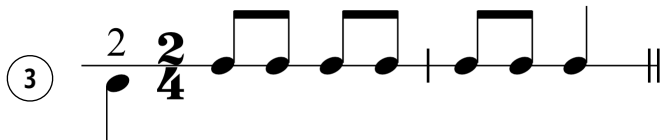
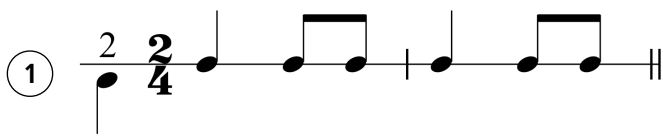
2) **E** \_ \_ \_ **B** \_ \_ \_ **F** \_ \_ \_

*backwards:*

3) **C** **B** \_ \_ **F** \_ \_ \_ **A** \_ \_

4) **F** \_ \_ \_ \_ **G** \_ \_ \_ **C** \_

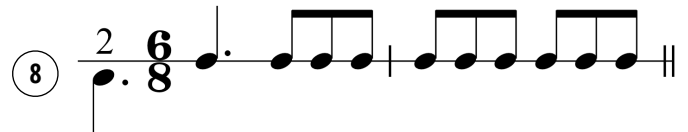
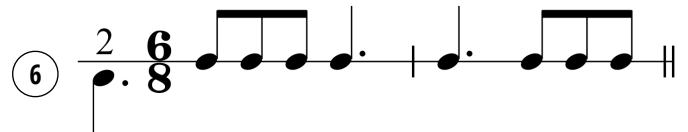
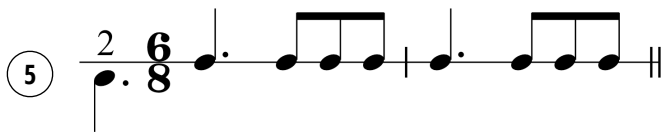
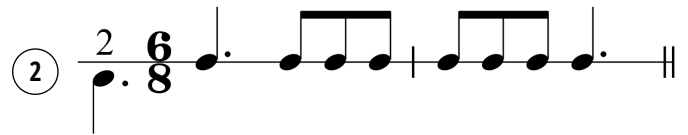
# DUPLE RHYTHM PATTERNS



Be expressive when performing with your voice and with your instrument!



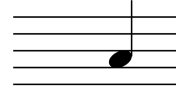
# TRIPLE RHYTHM PATTERNS



Be expressive when performing with your voice and with your instrument!

# FIRST FIVE NOTES

Use Baritone Lessons 4 & 5  
[www.BasicBand.info](http://www.BasicBand.info)



**F**

**E<sup>b</sup>**

**D**

**C**

**B<sup>b</sup>**

SO

FA

MI

RE

DO



**0**

**1**

**1 + 2**

**1 + 3**

**0**

# B<sup>b</sup> MAJOR SCALE

B<sup>b</sup> = DO

(concert Bb)

○ ● ○	○ ○ ○	● ○ ●	● ● ○	● ○ ○	○ ○ ○	● ● ○	○ ● ○	○ ○ ○
TI	<b>DO</b>	RE	MI	FA	SO	LA	TI	<b>DO</b>
	B <sup>b</sup>							B <sup>b</sup>

# DUPLE SONGS

## HOT CROSS BUNS

MI RE **DO** (rest) | MI RE **DO** (rest) | **DO-DO-DO-DO** RE-RE-RE-RE | MI RE **DO** (rest) |

## MARY HAD A LITTLE LAMB

MI RE **DO** RE | MI MI **MI** (rest) | RE RE **RE** (rest) | MI SO **SO** (rest) |

MI RE **DO** RE | MI MI **MI** (rest) | RE RE **MI** RE | **DO** ----- |

## GO TELL AUNT RHODIE

MI ----- **MI** RE | **DO** ----- **DO** (rest) | RE ----- **RE** FA | MI RE **DO** (rest) |

SO ----- **SO** FA | MI ----- **MI** (rest) | RE FA MI RE | **DO** ----- |

### LIGHTLY ROW

SO MI **MI** (rest) | FA RE **RE** (rest) | **DO** RE **MI** **FA** | SO SO **SO** (rest) |

SO MI **MI** (rest) | FA RE **RE** (rest) | **DO** MI **SO** **SO** | **DO** ----- |

### AU CLAIRE DE LA LUNE

**DO** **DO** **DO** RE | MI ----- **RE** (rest) | **DO** MI **RE** RE | **DO** ----- |

### TWINKLE LITTLE STAR

**DO** **DO** **SO** **SO** | LA LA **SO** (rest) | FA FA **MI** MI | RE RE **DO** (rest) |

SO SO **FA** FA | MI MI **RE** (rest) | SO SO **FA** FA | MI MI **RE** (rest) |

### SKIP TO MY LOU

**MI** **MI-MI** **DO-DO-** | MI MI **SO** (rest) | RE RE-RE TI-TI-TI | RE RE **FA** (rest) |

**MI** **MI-MI** **DO-DO-** | MI MI **SO** (rest) | RE MI-FA MI RE | **DO** ----- **DO** (rest) |

# TRIPLE SONGS

## ROW YOUR BOAT

D - - | D - - | D - RE | MI - - | MI - RE | MI - FA | SO - - | - - - |  
D D D | SO SO SO | MI MI MI | D D D | SO - FA | MI - RE | D - - | - - - |

## RING AROUND THE ROSEY

SO - SO | MI - LA | SO - - | MI - - | SO - SO | MI - LA | SO - - | MI - - |  
SO - - | MI - - | SO - - | MI - MI | SO - - | SO - - | D - - | - - - |

## FARMER IN THE DELL

D - D | D - D | D - - | - - RE | MI - MI | MI - MI | MI - - | - - - |  
SO - - | SO - LA | SO - MI | D - RE | MI - MI | RE - RE | D - - | - - - |

### POP GOES THE WEASEL

D - D | RE - RE | MI SO MI | D - SO | D - D | RE - FA | MI - - | D - - |  
D - D | RE - RE | MI SO MI | D - - | SO - - | RE - FA | MI - - | D - - |

### THE ITSY-BITSY SPIDER

D - D | D - RE | MI - - | MI - MI | RE - D | RE - MI | D - - | - - - |  
MI - - | MI - FA | S - - | S - - | FA - MI | FA - S | MI - - | - - - |  
D - D | D - RE | MI - - | MI - MI | RE - D | RE - MI | D - - | S - S |  
D - D | D - RE | MI - - | MI - MI | RE - D | RE - MI | D - - | - - - |

### THREE BLIND MICE

MI - - | RE - - | D - - | - - - | MI - - | RE - - | D - - | - - - |  
SO - - | FA - FA | MI - - | - - - | SO - - | FA - FA | MI - - | - - S |  
D - D | TI LA TI | D - SO | SO - SO | D - D | TI LA TI | D - SO | SO - S |  
D - D | TI LA TI | D - SO | SO - FA | MI - - | RE - - | D - - | - - - |

# CHROMATIC SCALE

## ALWAYS REMEMBER

- The **Chromatic Scale** is when you play every note on the instrument, in order, up or down.
- When you go up, use sharps (#). When you go down, use flats (b).
- It can start and end on any note.

b

flat  
makes a note  
**lower**

#

sharp  
makes a note  
**higher**



**A#**

OR

**B<sup>b</sup>**

**B**

**C**

**C#**

OR

**D<sup>b</sup>**

**D**

**D#**

OR

**E<sup>b</sup>**

**E**

**F**

**F#**

OR

**G<sup>b</sup>**

**G**

**G#**

OR

**A<sup>b</sup>**

**A**

**A#**

OR

**B<sup>b</sup>**



